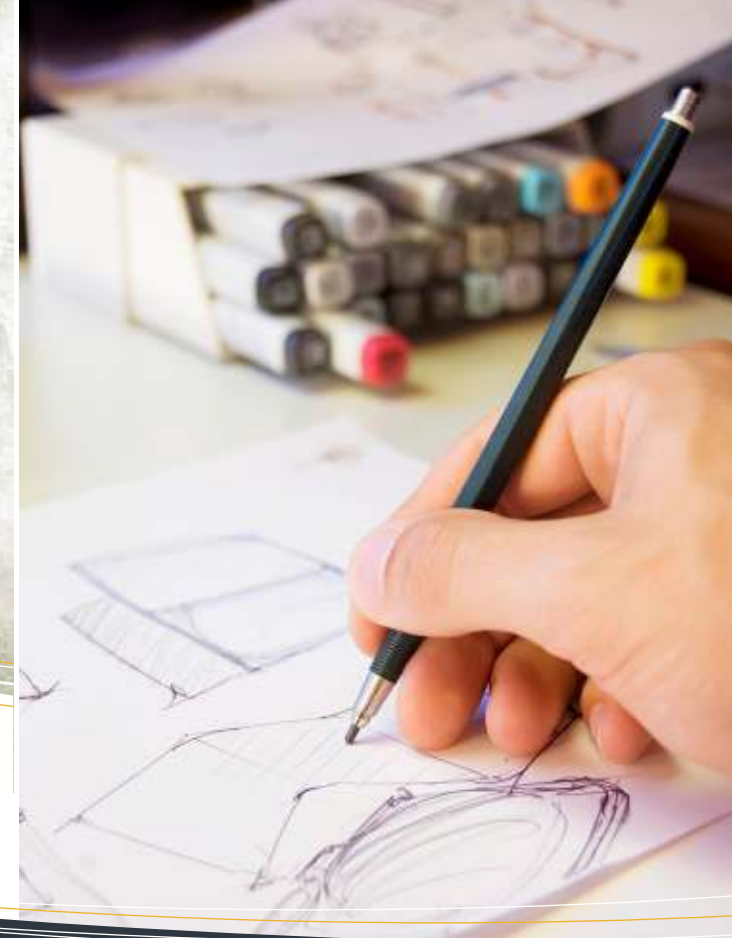


- ❖ Solutions
- ❖ Quality
- ❖ Price



HIGH TECH MOBILE WORKSTATIONS

We use the best technology available to handle your most demanding design needs. Shown here is a **Dell Precision® M6300** Mobile Workstation running **SolidWorks®** 3D CAD Software.

At SolidDoctor our fundamental objective is to offer custom tailored solutions with exceptional quality and an attractive price.

We saw an opportunity to provide top quality service at a much lower cost than our competition. Many design firms waste valuable time and money on designs that are costly to produce. No doubt their concepts look good but often they are expensive to procure and difficult to assemble, sometimes even functionality is sacrificed in order to make the product "pretty".

Great designs start with great resources and are constructed with a delicate balance of aesthetics, functionality, manufacturability and cost.



We make house calls.



New product design
And documentation



38 Apache Way
Wilmington, MA 01887
Phone: 978.604.0331
Email: info@soliddoctor.com
Web: www.soliddoctor.com

SolidWorks® is a registered trademark of Dassault Systèmes SolidWorks Corp.
Dell Precision® is a registered trademark of the corporation known as Dell Inc.



Custom tailored solutions
Exceptional quality
Attractive price



Flexible solutions for your business needs

SolidDoctor specializes in The design and documentation of new and Existing products, but that's just the beginning of our many capabilities. We also provide solutions to all your design service needs, and if you don't happen to see exactly what you're looking for, just ask, we can create a custom solution specifically tailored to meet your highest demands.

Why SolidDoctor?

- ✓ No long term contracts or commitments
- ✓ Flexible payment schedules, pay as you go
- ✓ Best pricing/quality/value available
- ✓ Zero associated cost from hiring employees; benefits/unemployment
- ✓ Office space not required, we can collaborate internally or externally
- ✓ We provide our own CAD Software and Workstations
- ✓ We're flexible

CAPABILITIES



- Sheet Metal
- Machined Parts
- Plastics
- Concepts
- Prototypes
- Mfg. Procedures
- Logo Creation

CUSTOM SOLUTIONS



- New Product Design
- Project Management
- Consulting
- Support for Startups
- Doc Control
- CAD Assistance
- 2D to 3D Conversions

BENEFITS



- Best price/quality/value
- Flexible payment options
- No long term commitments
- No drawn out hiring process
- No employee overhead
- No materials/resources cost
- No unemployment expenses



Find out what SolidDoctor can do for you?



Phone: 978.604.0331



Email: info@soliddoctor.com



Web: www.soliddoctor.com